



Malaysia

Postgraduate

Prospectus 2019/2020

295
710
847
293
124
44.
22.2
10.4

Contents

Why Choose Heriot-Watt	02
Reputation and Rankings	04
Why Malaysia	06
Heriot-Watt Malaysia	07
A Global University	08
Supporting You	10
Your Career and Employability	12
Pioneering Research with Global Impact	14
Bringing Clean Energy to the World	16
Ensuring Business Sustainability for the Future	18
What Can I Study at Heriot-Watt	20
Postgraduate Taught Degrees	22
Postgraduate Research Degrees	24
Our Pioneering Research is...	26
How to Apply	27
Maps & Contact	28



Why Choose Heriot-Watt

Heriot-Watt is one of the world's leading universities with strong links to international business and industry driven by our established reputation as a top research-led institution.

With a rich heritage stretching back to 1821, we are a truly global university bringing together scholars who are leaders in ideas and solutions delivering innovation, educational excellence and ground-breaking research.

My experience with Heriot-Watt has been a high point in my life. It's been a great pleasure to be able to study at a respectable and high-ranked institution while working in Malaysia. My studies have been a perfect blend of academic and industry knowledge while working with classmates from a diverse background. There is something special about the environment here that makes it comfortable for me to study. Lecturers are highly experienced, making each class fun, educational and interactive.

Didar Akhmedin (Kazakhstan) working at Bestinet Sdn Bhd
MSc Strategic Project Management



STUDY AT HERIOT-WATT UNIVERSITY

FROM TOP 10 RANKINGS TO STUDY ABROAD OPTIONS, THERE ARE MANY REASONS TO CHOOSE HERIOT-WATT. HERE ARE JUST A FEW OF THEM.

A RICH HERITAGE

We are proud that since our foundation in 1821 we have been outward-looking pioneers of education, in pursuit of knowledge to the benefit of society and the world.

GLOBAL REACH

We are a truly global university with around 29,000 students, five campuses and over 100 learning partners around the world. We are one of Scotland's most international universities; around a third of Heriot-Watt students in Edinburgh are from outside the UK.

WORLD-CLASS EXPERTS

We are world-renowned for excellence in teaching and research. We are ranked in the top 30 universities in the UK (The Guardian University League Table 2018) and in the top 10 in the UK and first in Scotland for research impact (REF 2014).

STRONG LINKS TO BUSINESS AND INDUSTRY

Our taught programmes and research are informed by the needs of business and industry. We actively facilitate collaborations and partnerships, building strategic alliances and promoting knowledge transfer.

GLOBALLY EMPLOYABLE GRADUATES

Global companies actively seek out our graduates as they are work ready. Our programmes are designed to ensure that students receive a relevant, career-orientated education. As a result, more than 86% of our students are in graduate-level jobs or further study six months after completing their programme.

OPPORTUNITIES TO STUDY ABROAD

When you join Heriot-Watt University you become part of a friendly, global community. We actively encourage our students to push geographical boundaries through our opportunities to study abroad.

INNOVATIVE RESEARCH

Heriot-Watt University is globally recognised for pioneering research and innovation, changing the world and transforming lives. Our research focuses on real-world issues and we are ranked in the top 10 in the UK for industry income. This is based on the value of industry research income per member of academic staff.

WORLDWIDE CONNECTIONS

When you join Heriot-Watt you become part of a global family. We have over 123,000 alumni worldwide. The Watt Club was founded in 1854 and is the oldest graduate club in the UK. Lifetime membership is automatic upon graduation from Heriot-Watt and is free to all graduates of the University.

Our Impact

A world-leading university with strong links to international business and industry, attracting leaders in ideas and solutions tackling real-world challenges.

9th/
82%

WORLD-CLASS SPECIALISTS

The Research Excellence Framework (REF) 2014 ranked Heriot-Watt 9th university in the UK for impact with 82% of research ranked world-class.

5 GLOBAL
CAMPUSES

A truly international university with five global campuses, partners in over 100 countries and around 29,000 students studying worldwide.

THE TIMES
THE SUNDAY TIMES

GOOD
UNIVERSITY
GUIDE
2018

INTERNATIONAL
UNIVERSITY
OF THE YEAR

86%+

GRADUATE-LEVEL JOBS

Over 86% of our postgraduates are in graduate-level jobs or further study six months after completing their programme and are actively sought by global industry.

www.hw.edu.my

Reputation and Rankings

Heriot-Watt is world-renowned for conducting ground-breaking research which is relevant to business and industry. We aim to find radical innovations and solutions to real-world challenges for the benefit of society.

STUDYING WITH US

We will bring you into contact with leading researchers who are working on some of the most important areas for twenty-first-century society. Over 80% of academic staff are currently engaged in research at internationally recognised levels, delivering research as diverse as providing greater equality for deaf people, helping to manage risk in the insurance industry and enhancing oil extraction from the North Sea. As part of our community you will benefit from an environment focused on making a real and lasting contribution to issues that matter, and discover opportunities to make your own impact.

WORLD-LEADING RESEARCH

We have excellent facilities, highly rated teaching and world-leading research activity which together provide an exceptional learning and teaching experience. As part of a bright, committed and imaginative community of postgraduates you will have the opportunity to realise your potential by gaining the knowledge and skills you need to achieve your career aspirations.

12TH

MALAYSIA

UNESCO's Top 20 Countries for Student Destination.

TOP 10%

RANKED IN THE TOP TEN

Building, Chemical Engineering and Town and Country Planning.
Times/Sunday Times Good University Guide 2018

Our Impact

TOP 20

STUDENT MIX/INTERNATIONAL STAFF

Top 20 in the UK for international student mix.
QS World University Rankings 2017/18.

Top 30 in the UK for international staff.
QS World University Rankings 2017/18.

TOP 30 +40

UK RANKING

Top 30 in the UK out of 121 universities.
Guardian University Guide 2018.

Top 40 in the UK out of 127 universities.
Times/Sunday Times Good University Guide 2017.

Heriot-Watt has risen six places to 28th in the UK. 2018 Complete University Guide.

TOP 10

IN THREE SUBJECT AREAS IN THE UK

- Building
- Mathematics
- Town and Country Planning and Landscape Design.

2020 Complete University Guide.

Why Malaysia

Making the most of both learning and leisure time is second nature to the aspiring Heriot-Watt University student studying at the Malaysia Campus.

Kuala Lumpur is ranked 1st as the most affordable city to live in, according to QS University Rankings 2017.



The striking campus reveals itself within the landscape, from beneath a living grass roof. Located next to the Putrajaya lake, part of the administrative capital's 'green continuum', the building is consciously designed with the environment in mind and is built to Green Building Index (GBI) standards.



12th

Ranked 12th in UNESCO's Top 20 Countries for Student Destination

Dubbed "Mini Asia", Malaysia is a multi-racial and multi-ethnic country where the majority are Malays, Chinese and Indian.

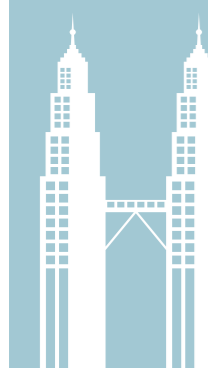


Home to some of the world's most idyllic beaches and islands, Malaysia has over 4,600km of coastline with over 90 to choose from. Located on the equator's belt, the country has 12 hours of sunlight every day, with an average temperature of 27 degrees Celsius.

4,600 km



The capital of Malaysia is



Kuala Lumpur

The population is estimated at 30 million people

30 MILLION



Heriot-Watt Malaysia

Whether you are a Malaysian or are travelling from abroad our purpose-built campus in Putrajaya, where we are located, has something to offer for every aspiring graduate.

A fantastic central location

Heriot-Watt University Malaysia's campus is based in the modern garden-city of Putrajaya just 25km south of Malaysia's capital Kuala Lumpur. Putrajaya is a growing, dynamic city and its proximity allows easy access to the extensive cultural, leisure and retail amenities of the buzzing metropolis.

Malaysia's first green campus

Heriot-Watt University Malaysia's purpose-built campus opened to students in Putrajaya in September 2014 and the formal launch took place on 12 February 2015.

The £35m campus sits on 4.8 acres in a stunning lakeside location providing exceptional educational facilities in an excellent environment, close to the Putrajaya marina and its modern

leisure and sports facilities. This is a fantastic green area, part of Putrajaya Lake's 'green continuum', and the building design is a conscious reference.

A green roof to match

The 'green campus' is remarkable for having the first living grass roof of its kind in Malaysia. At 300 metres long and 30 metres wide, it is the most recognisably sustainable feature of the campus. The roof shades the naturally ventilated spaces below, reduces thermal transmittance, and acts as an observation deck, accessible by glass lift. Other environmentally friendly, passive design features include campus lighting 'powered' by the maximum use of natural daylight, a rainwater harvesting system and optimised air-conditioning and thermal control systems.

A state-of-the-art learning environment

The campus is a state-of-the-art teaching and learning environment, reflecting our status as a leading provider of high-quality, professionally orientated education, knowledge transfer and research. Architect-designed in conjunction with educational design specialists, the campus has been developed with the current generation of students in mind, to create a dynamic, exciting place which maximises the potential of its setting for study and student life.



A Global University

With our roots in Scotland, our ambition and reach are truly international. A leader in transnational education, wherever we are, Heriot-Watt is a powerful driver and engine of the economy. Together with our alumni, civic community and industry partners, we transform people, society and the world we live in.

Our global campuses are situated in some of the world's most inspiring locations. Each offers superb facilities, safe surroundings and an international welcome. We offer a unique learning environment close to the exciting and vibrant cities of Edinburgh, Dubai and Kuala Lumpur.

TOUR OUR INTERNATIONAL CAMPUSES AT:
www.hw.ac.uk/virtualtours



Edinburgh

A FESTIVAL CITY WITH AN INTERNATIONAL OUTLOOK

Living in Edinburgh is exciting and fulfilling. Home to the Edinburgh International Festival and the Edinburgh Festival Fringe, it is a focal point for art, culture, comedy and drama. The Edinburgh Campus is an exceptional environment within easy reach of one of Europe's most exciting cities. Exceptional teaching facilities and our close links with industry make our Edinburgh Campus a fulfilling and stimulating environment, while our £7 million purpose-built Postgraduate Centre is a hub for advanced learning and research. Our Edinburgh Campus is truly international; over 10,500 staff and students are based here, with around a third of them coming from outside the UK.

Find out more: www.hw.ac.uk/edinburgh



Dubai

WORLD-CLASS EDUCATION TAILORED TO UAE INDUSTRY NEEDS

With a recent investment of £35 million our campus in the Dubai International Academic City is a modern, contemporary environment for around 3,400 students who are studying programmes tailored to meet the demands of the UAE and wider Middle Eastern and African economies and employment markets.

Find out more: www.hw.ac.uk/dubai



Malaysia

AN INSPIRATIONAL PLACE TO STUDY

Our state-of-the-art, £35 million Malaysia Campus in a stunning lakeside location opened in September 2014, creating opportunities for up to 4,000 students to study a range of professionally relevant programmes tailored to the needs of the Malaysian and Asian economies and employment markets.

Find out more: www.hw.ac.uk/malaysia



Galashiels

A WORLD-LEADING CENTRE FOR CREATIVITY

Our Scottish Borders Campus is located in Galashiels in the heart of the Scottish luxury textiles industry. This inspiring learning environment is a centre for excellence and an exceptional place for learning and living. The Scottish countryside setting brings its own special perspective to your experience here. A new Scottish Borders rail route opened in September 2015 giving students access to Edinburgh city centre in 50 minutes.

Find out more: www.hw.ac.uk/borders

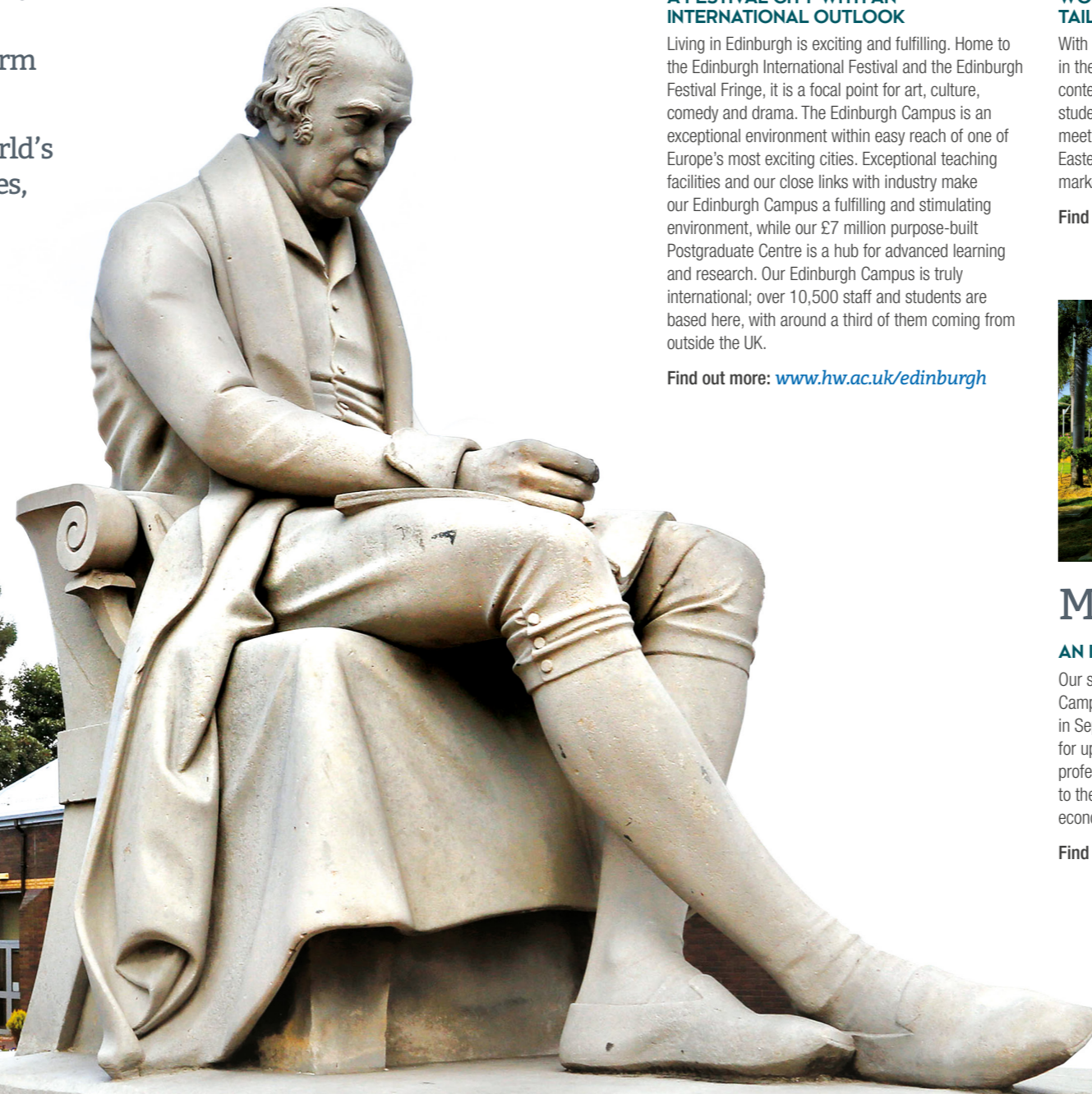


Orkney

A 'LIVING LABORATORY' SUPPORTING THE GLOBAL MARINE INDUSTRY

The International Centre for Island Technology (ICIT) is a specialist arm of the School of Energy, Geoscience, Infrastructure and Society. With strong international industry links and collaborations, Orkney's MSc programmes are truly global. Its location in the sheltered harbour of Hamnavoe and Scapa Flow provides a 'living laboratory' which supports a wide range of research, teaching and consultancy activities in the marine, oil and gas, and fisheries sectors.

Find out more: www.hw.ac.uk/orkney



Supporting You

At Heriot-Watt, we believe that a university education is an investment in your future. In order to help with your finances, we offer a range of scholarships to qualifying students.

Tuition Fees

For full details of current tuition fees and registration fees for local and international students, please visit:
www.hw.edu.my/fees

Scholarships

Our range of scholarships to qualifying students includes those offered by Heriot-Watt and industry partners.

For full details of all the scholarships and assistance offered, visit:
hw.edu.my/scholarships

Heriot-Watt Corporate Partnership Postgraduate Bursary

The Heriot-Watt Corporate Postgraduate Partnership Bursary is a concession package for students who are applying to our postgraduate taught programmes in a group of more than one from the same company. This is applicable for local, international, part-time or full-time students.

How does it work?

- Up to three employees from the same organisation enrolling for any postgraduate taught programme within the same intake will be entitled to a 25% reduction in fees for all.
- four employees and above from the same organisation enrolling for any postgraduate programme within the same intake will each receive a 30% reduction in fees.

Family Discount

(For Foundation, Undergraduate and Postgraduate Taught Studies)

A discount of 10% is granted to children and/or a spouse of a Heriot-Watt University alumni who register for a programme of study at Heriot-Watt University Malaysia. This discount is also granted to siblings of currently registered students of Heriot-Watt University Malaysia.

Heriot-Watt Alumni Waiver

(For Postgraduate Taught Studies only)

A fee waiver of 20% is granted to Heriot-Watt University alumni who register for postgraduate programmes of study at Heriot-Watt University Malaysia.

This is awarded on receipt of documentary evidence of an undergraduate or postgraduate award from Heriot-Watt University.

Application Advice

We also support and advise students in the application of loans and grants. The Scholarship and Financial Aid Unit assists in providing certification for documents required for the application for EPF withdrawals, bank loans and more.
hwum@hw.ac.uk



1

Almost **half a million ringgit** worth of PhD scholarships available for full-time students studying at the Malaysia campus.



2

25% reduction in fees if you apply with your colleagues for Postgraduate taught studies.



3

20% alumni scholarships for Heriot-Watt graduates applying to our Postgraduate taught programmes.



We provide support and assistance for applications to withdraw from your EPF account to fund your postgraduate studies.



KWSP | EPF

After graduating with a Bachelors degree in Applied Petroleum Engineering and working for a multinational company of repute for two years, I was looking for a degree that would allow me to dive deeper into my upstream specialization. A degree with which I can proudly feel that yes "I have completed my education". The search landed me to world renowned Heriot-Watt University. Its quality UK education and meticulously designed course syllabus simply enriches you. I am happy that I made the correct decision.

ABHIJIT SUNIL MALKANI,
MSc Petroleum Engineering

Your Career and Employability

Over 86% of our postgraduate students go on to graduate level jobs or further study within six months of graduating. We can help you to enjoy the same success.



CAREER-FOCUSED DEGREES

Our degrees are **career-focused** and **relevant** to the needs of business and industry. Employers actively **seek out our graduates** as our degrees are highly regarded for their relevance to the world of work. Many of our degrees are **accredited by professional bodies**.



LINKS TO EMPLOYERS

We have excellent links with business and industry, both in the UK and internationally. We help you meet some of the **world's top employers**, who know **the strengths our graduates bring to the workplace**.



Global Impact

86%

Over 86% of our postgraduates are in graduate-level jobs or further study six months after completing their programme and are actively sought by global industry.

120

SKILLS WORKSHOPS DELIVERED

6,702

GRADUATE JOBS ADVERTISED BY THE CAREERS SERVICE



JOB APPLICATIONS SUPPORT

Our Careers Service offers **individual advice** and **group workshops** on CVs, application forms, assessment centres, selection tests and interviews.



CAREERS FAIRS

Each year we hold two **university-wide recruitment fairs** and **seven industry-specific recruitment and networking events**, giving you the chance to meet with **graduate employers** and find out about **opportunities**.

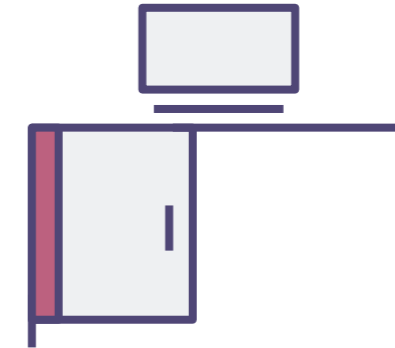


SUPPORT WITH CAREER PLANNING

Make an individual career guidance appointment with our Careers Service who can help you to identify your options, provide market intelligence, help you to develop your graduate attributes and provide individual career counselling.

WORK DURING YOUR STUDIES

Our **Careers Service** can help you to find opportunities for **part-time jobs, summer work experience and internships**, allowing you to gain invaluable experience during your studies.



BESPOKE CAREERS ADVICE

Each School has a **dedicated careers advisor** who collaborates with lecturers to integrate a **programme of events** into our degree programmes designed to equip you with the skills you will need to **plan and implement** your **career choice**.



● Heriot-Watt has a reputation for producing pragmatic 'can do' graduates and many of those have gone on to carve out a successful career with Shell. We have always enjoyed contributing to the University courses and careers fairs through the efforts of our Campus Ambassador team but now we have strengthened our ties with the University even further by funding the Shell Centre for Exploration Geoscience and by elevating Heriot-Watt to become one of our top target universities for recruitment. ●●

Paul Garnham, Shell's Campus Ambassador
Lead for Heriot-Watt University, Aberdeen



DUBAI



MALAYSIA



SCOTLAND

INTERNATIONAL RELATIONSHIPS

We have campuses in **Dubai, Malaysia**, and **Scotland** and about a third of students at our Edinburgh Campus come from countries outside of the UK. This **international ethos** ensures you meet a very broad range of people to help you to achieve **a global perspective through international links and friendships**.

JOIN THE WATT CLUB

Founded in 1854, the **Watt Club** is the UK's **oldest higher education alumni association** with over **123,000 alumni worldwide**. Becoming a graduate of Heriot-Watt University gives you **access to this international network**.



CONTINUED SUPPORT AFTER GRADUATION

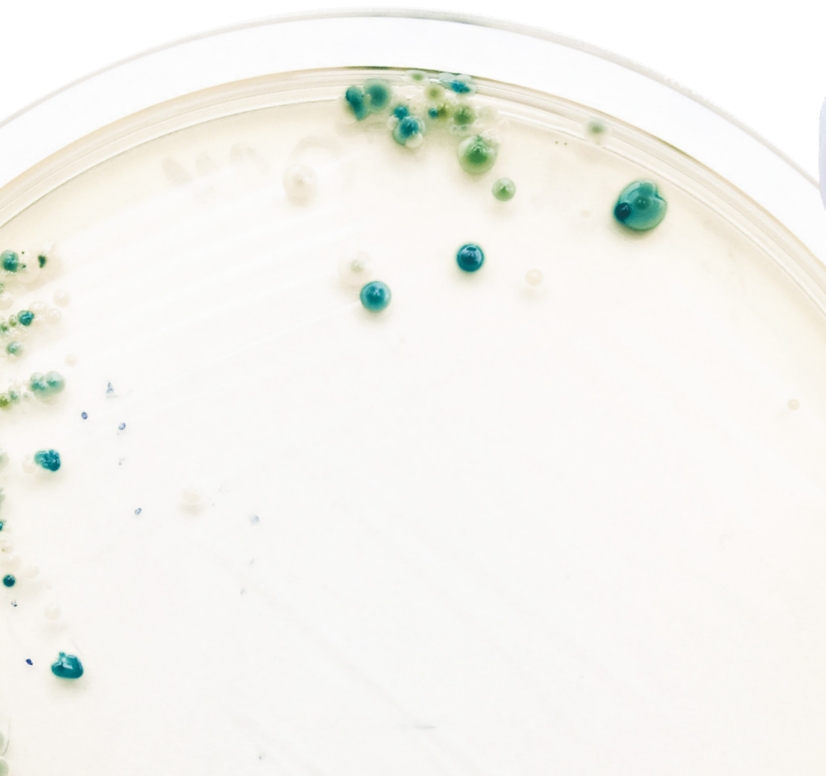
The Careers Service will continue to offer support and guidance for up to two years after you graduate, helping with those all-important first steps into the world of employment following completion of your studies.

www.hw.ac.uk/careers

Pioneering Research with Global Impact

Making a Difference in the Real World

Founded in 1821 as the world's first mechanics institute, Heriot-Watt has a rich heritage and an established reputation as a leading research-led university. Here we feature our leading academics and an insight into the real-life challenges they are currently tackling to make a difference in the real world. Leading global research informs the education we provide.



LEADERS IN IDEAS AND SOLUTIONS

Our Impact

9th/ 82%

WORLD-CLASS RESEARCH

The Research Excellence Framework (REF) 2014 ranked Heriot-Watt 9th university in the UK for impact with 82% of research ranked world-class.

80%+

RESEARCH-LED EDUCATION

Over 80% of academic staff are currently engaged in research at internationally recognised levels, delivering research as diverse as providing greater equality for deaf people, helping to manage risk in the insurance industry and enhancing oil extraction from the North Sea.

Real-World Education

Today, our communities of scholars come from across the world for a purpose: to deliver innovation and educational excellence in business, engineering, design and the physical, social and life sciences. A research-informed curriculum focuses on delivering practical solutions to real-world problems and creating solutions that have a positive impact on society worldwide.

As a university keenly focused on delivering excellence in research, we have significantly contributed to the development of research pooling. This initiative can enhance your studies and provide opportunities to meet people who can support your career aspirations. Providing collaborative opportunities for research and training across international universities creates an environment that is highly attractive to leading researchers around the world.

For more information about research please visit www.hw.ac.uk/research.htm

Bringing Clean Energy to the World

Dr Go Yun Ii

Dr Go Yun Ii from the School of Engineering and Physical Sciences discusses her work with solar photovoltaics (PVs) and how it is set to transform how the country uses energy.

Q: Can you describe what your specialist research focuses on?

A: My research focuses on solar energy systems, especially large-scale solar Photovoltaics (PVs) and Building-Integrated PVs. I work on estimating solar radiation, modelling and optimising PV systems, and assessing environmental impacts on PV performance. In previous work, I investigated the technical solutions required for large-scale solar applications and their socio-economic impact for Malaysia in helping meet world energy challenges. This research focused on the design of energy storage solutions and assessed the grid integration. A Certified Competent Person, as confirmed by the Malaysia Sustainable Energy Development Authority (SEDA), I am formally qualified to design & endorse grid-connected PV systems under the Sustainable Energy Development Act 2011. This allows me a key opportunity to represent industry-specific practices and applications within my research work.



Q: How is your work influencing tomorrow's world?

A: Global energy systems are required to undergo a paradigm shift by transforming energy sources from conventional fossil fuel to renewable energy in order to limit global temperature increases to within two degrees Celsius to meet the requirements of the Paris Agreement. This transition is expected to benefit our communities through a growth in GDP and an increase in employment in the clean energy sector globally. Additionally, the United Nations has outlined 17 Sustainable Development Goals (SDGs) to be achieved by 2030. Goal number 7 directly addresses accessibility to affordable and sustainable energy and supports an increase in the share of demand met by renewable energy sources. This emphasises the importance of research in renewable energy technologies and underlines the urgency of accelerating clean energy adoption, especially in lesser-developed regions of the world. Based on the International Energy Agency's report focusing on Southeast Asia, Malaysia exhibits considerable potential in terms of renewable energy for electricity generation in comparison to other ASEAN countries. Malaysia also aims to become the second largest producer of solar PVs in the world and is expected to achieve a 45% reduction in greenhouse gas emissions by 2030. My research covers both the technical and socio-economic aspects supporting large-scale implementation of solar energy in Malaysia. The outcomes from my work will in turn serve as a reference for other countries planning similar initiatives.

Q: How has working with industry made an impact on your work?

A: As a Professional Engineer, I strive to strike a balance between the discovery of new theory and its adoption within and across our community. The challenge is to foster a transition which allows us to connect the world of academia with industry. As an example, in one of our recent industry projects, we investigated different environmental impacts on Building Integrated PV performance and proposed an optimized configuration. Additionally, during my industrial secondments, I have engaged with a research entity that supports the national mainstream utility provider, as well as with the Malaysian Communication & Multimedia Commission (MCMC) in the capacity of Deputy Director where I led research supporting the introduction of a 'Smart Digital Nation Programme'. I believe it is important that our research should take real life problems into consideration, thus enabling us to help close the gap between the academic sector and the industry practitioner.

Q: What do you think gives Heriot-Watt postgraduates that extra edge in their chosen field of expertise?

A: Our MSc in Renewable Energy and MSc in Energy programmes enable our students to explore various issues to develop a critical understanding of the significant changes afoot in the energy sector and to understand the challenges of system integration. Through a series of courses that cover, for example, technological and socio-economic aspects as well as environmental impact assessments, our students acquire a better understanding of the challenges and opportunities presented by establishing technical solutions to specific problems. Our programmes are focused on delivering engineering expertise with a clear focus on the energy sector; our main graduate destination. Graduates also find employment within other industrial sectors requiring energy expertise.

Q: What advice would you give to a postgraduate student considering Heriot-Watt?

A: Our MSc in Renewable Energy & MSc in Energy programmes are recognised by the Engineering Council UK, via the Energy Institute, as accredited for further learning for Chartered Engineer status. Our programmes also provide a springboard to a wider international energy sector, with graduates well-equipped to explore global employment opportunities.

Malaysia exhibits considerable potential in terms of renewable energy for electricity generation in comparison to other ASEAN countries. Malaysia also aims to become the second largest producer of solar PVs in the world and is expected to achieve a 45% reduction in greenhouse gas emissions by 2030. My research covers both the technical and socio-economic aspects supporting large-scale implementation of solar energy in Malaysia.

Dr Go Yun Ii,
School of Engineering and Physical Sciences



Ensuring Business Sustainability for the Future

Dr Praveen Balakrishnan

Dr Praveen Balakrishnan from the **School of Social Sciences** speaks about his passion for business sustainability and how it affects both the environment and society. He explains how securing financial success is not just about maximising economic value, but is also about ensuring social and environmental viability.

Q: Can you describe what your specialist research focuses on?

A: My research passion lies in the area of business sustainability. My focus is on examining how academic knowledge can be applied to help us reach practical solutions to the pressing socio-environmental challenges of sustainability. Specifics include aspects of environmental marketing, corporate environmental responsibility, the role of social enterprises and developing sustainable business models.

Q: How is your work influencing tomorrow's world?

A: Recent changes to socio-environmental characteristics have been wide-reaching and have happened rapidly in comparison to historical trends. However, due to advances in technology and communication models, there is a corresponding growth in public awareness and interest in such issues. The last two decades in particular have seen the evolution of the concept of sustainability, removing much of the ambiguity surrounding it and seeing it as a question of the economic, political, social, technological, environmental and ethical development of society. The concept is now much more holistic and is widely accepted as a guiding principle supporting our future economic, social and environmental construct. With corporations and policy makers now recognising the importance of such issues, sustainability is set to occupy an irrefutably strong position within business strategy development.

Q: How has working with industry made an impact on your work?

A: I believe that pursuing knowledge should have purpose and must have an impact on the industry or on our wider society. This requires close collaboration between industry, society and academia to ensure we get a clearer perspective of real-life problems that help us chart our future research direction. Liaising with industry not only benefits research but enhances our teaching too. Industry speakers, industry visits and real life case analyses all help our students connect their theoretical work to practical applications and allow them to become better practitioners.



Q: What do you think gives Heriot-Watt postgraduates that extra edge in their chosen field of expertise?

A: We live in a truly globalised environment. Business activities are no longer constrained by the boundaries of a single geographic region, making the environment within which we operate more complex and dynamic. Unlike the physical sciences, social science may not always offer a single tested and proven solution to problems arising from varying scenarios. Hence, business students need to be exposed to the global dimension of societal challenges. Heriot-Watt, being a globally connected university, facilitates this environment by providing student mobility across campuses. Our international campus environment provides students with a multi-cultural experience and helps them work in diverse teams. Students can also draw from the expertise of research-focused academics located globally; something that can provide them with a different and informative perspective on the same problem.

Q: What advice would you give to a postgraduate student considering Heriot-Watt?

A: We aim to equip our students with the skills to make a difference in the world. So come to Heriot-Watt and ensure your impact!



The last two decades in particular have seen the evolution of the concept of sustainability, removing much of the ambiguity surrounding it and seeing it as a question of the economic, political, social, technological, environmental and ethical development of society. The concept is now much more holistic and is widely accepted as a guiding principle supporting our future economic, social and environmental construct.

Dr Praveen Balakrishnan,
School of Social Sciences

What Can I Study at Heriot-Watt

All of our taught programmes and research degrees are grouped into subject tables on the following page with an indication of the level of award. To get more detailed information on the structure of our programmes including course content, entry requirements, modes of delivery (full-time/part-time), fees and funding please go to our website:

www.hw.ac.uk/malaysia



T Taught Programme R Research Degree

School Energy, Geoscience, Infrastructure and Society

Programme	Level	Mode	Award
T Construction Project Management (KPT/JPS (R/526/7/0026) (FA2926) 02/23)	Taught	FT/PT	MSc
T Commercial Management and Quantity Surveying (KPT/JPS (R/526/7/0032) (FA3475) 06/23)	Taught	FT/PT	MSc
T Petroleum Engineering (KPT/JPS (R/544/7/0001) (FA3474) 06/23)	Taught	FT/PT	MSc
R Architecture and Building (Pending MoE approval)	Research	FT/PT	PhD

School of Social Sciences and Edinburgh Business School

Programme	Level	Mode	Award
T Business Strategy, Leadership and Change (KPT/JPS (N/345/7/0839) (FA5527) 08/20)	Taught	FT/PT	MSc
T Business Psychology (KPT/JPS (N/311/7/0028)(FA3653) 06/23)	Taught	FT/PT	MSc
T International Business Management with Finance (KPT/JPS (N/340/7/0718) (PA8512) 12/21)	Taught	FT/PT	MSc
T International Business Management with Marketing (KPT/JPS (R/340/7/0351) (FA3830) 10/23)	Taught	FT/PT	MSc
T Strategic Project Management (KPT/JPS (N/345/7/0508) (FA4163) 03/24)	Taught	FT/PT	MSc
T Master of Business Administration (KPT/JPS (R/345/7/0228) (FA2182) 08/22)	Taught	PT	MBA
R Business and Administration (KPT/JPS (N/340/8/0734) (PA10716) 4/26)	Research	FT/PT	PhD
R Social and Behavioural Science (KPT/JPS (N/310/8/0038) (PA10715) 2/26)	Research	FT/PT	PhD

School of Engineering and Physical Sciences

Programme	Level	Mode	Award
T Energy (KPT/JPS (R/522/7/0033) (FA2722) 03/23)	Taught	FT/PT	MSc
T Renewable Energy Engineering (KPT/JPS (R/522/7/0030) (FA2721) 02/23)	Taught	FT/PT	MSc
R Engineering and Engineering Trades (KPT/JPS (N/520/8/0107) (PA10719) 05/26)	Research	FT/PT	PhD

School of Mathematical and Computer Sciences

Programme	Level	Mode	Award
R Statistics KPT/JPS (N/462/8/0032) (PA10716) 4/26)	Research	FT/PT	PhD

Postgraduate Taught Degrees

Heriot-Watt, Malaysia, provides the ideal environment for one to undertake postgraduate studies. You are able to choose between a full-time and a part-time study mode, ensuring flexibility that would best suit your time. As the programmes are industry-driven, so are the lecturers who will be leading the courses – ensuring that everything you learn are applicable to what you will be doing in the working world and enhances your global career.

We specialise in the following fields:

Building and Town Planning

Our building and town-planning related programmes are not only top-ranked in the world, but also highly recognised by the industry both in Malaysia and the UK:

MSc Construction Project Management

- This programme equips graduates with the knowledge and skills to develop successful careers as professional project managers in the construction industry and beyond.
- It offers a breadth of management, procurement and technology related subjects. It is focused on industrial relevance, ensuring that graduates are quickly able to make a positive and effective contribution to the success of their working environment, and the development of their own professional careers.

MSc Commercial Management And Quantity Surveying

- There is consistent competition amongst those wishing to enter and develop a career in quantity surveying in order to gain an internationally recognised postgraduate qualification, such as the MSc from Heriot-Watt University. Successful completion of the programme develops the necessary skills to provide a quality benchmark recognised by prospective employers to enhance an individual's career progression.

Business

With very close links to industry, commerce and relevant professional bodies, our business-related programmes are world-renowned for their teaching and research:

MSc Business Psychology

- The programme is aimed at people already in, or aspiring towards, a career in any business setting. It provides detailed understanding of all those aspects of psychology relevant to the workplace. The programme equips graduates with knowledge and understanding of psychological theory, evidence and methods relevant to business practice in a wide range of organisations.

MSc Business Strategy, Leadership and Change

- The programme offers five taught core courses, four are strategy-oriented with the fifth being a research methods course, which are designed to be of relevance to senior and middle managers, high-potential junior managers, management consultants, entrepreneurs, and directors of small and medium-sized enterprises.

MSc International Business Management with Finance/Marketing

- This Master's degree is aimed at graduates who have little or no business or management background in their first degree and who wish to gain a broad based business qualification to enhance their future career prospects, or at those looking to develop business management knowledge and skills to allow them to change or further their careers.
- The programme allows appreciation of business management within dynamic, international contexts; application of theoretical solutions to business problems to inform effective practice; engagement in business-relevant decision-making, marketing, leadership and teamworking.

MSc Strategic Project Management

- The MSc in Strategic Project Management is an established and highly regarded programme at Heriot-Watt University. By undertaking the programme students develop skills in strategic thinking, innovation, leadership, business models, best practices and the latest research in project and programme management.
- This Master's degree differentiates itself from other project management programmes by providing greater emphasis on strategically managing a portfolio of projects to deliver organisational goals.

Engineering

We have an international research reputation and close connection with the professional and industrial world of science, engineering and technology:

MSc Energy

- This multi-disciplinary programme offers courses relevant to energy resources, power generation, process engineering, environmental legislation and environmental impact, energy in buildings as well as business courses. Through its portfolio of options, this programme is accessible to graduates from many Engineering and Science degrees.
- The aims of the programme are to provide a practical and theoretical grounding in technologies and wider knowledge and skills relevant to the Energy sector for the practising engineer as well as decision making managers and policy makers.

MSc Petroleum Engineering

- The MSc in Petroleum Engineering is a programme of lectures and project work, encompassing a wide range of petroleum engineering fundamentals, pertinent to the modern petroleum industry. Project work provides an opportunity for ideas and methods, assimilated through lectures and tutorials, to be applied to real field evaluation and development design problems.
- The courses are applied in nature and have been designed so that a graduate is technically well prepared for, and has a sound knowledge of, the industry into which he or she will be recruited.

MSc Renewable Energy Engineering

- This Master's degree is a specialist programme with a clear Mechanical Engineering focus. It aims to equip students with a wide spanning, yet detailed overview of renewable energy resources and their exploitation, as well as the socio-economic and environmental impacts of related activities. To do this, the programme provides a broad introduction to current energy issues and specialist knowledge and skills to analyse, appraise or design renewable energy systems or equipment.



Postgraduate Research Degrees

Heriot-Watt, Malaysia, provides an outstanding environment to undertake postgraduate research leading to a PhD. We offer supervision by leading academics working at the forefront of their discipline and delivering research that helps transform society and drive the economy. We also offer first-class training in both specialist and generic skills that focuses on providing the necessary support for career development.

Research projects are offered with supervisors working at the cutting edge of contemporary topics from the fundamental to the applied in all of our disciplines. Projects often involve working in research teams, with industry involvement, and many with collaborations with other leading research laboratories around the world.

PHD DEGREES OFFERED:

- Social and Behavioural Science
- Business and Administration
- Statistics
- Engineering and Engineering Trades
- Architecture and Building (pending MoE approval)

Research opportunities and scholarships

School, Research Institute, and Research Centre web pages provide detailed information on research and potential research project opportunities for PhD studies.

The University offers annual James Watt Scholarships, approximately 80 each year, for well-qualified applicants.

The research degrees listed are not exhaustive. If you have an idea around a specific research theme please get in touch. Our contact details are listed opposite.

PhD opportunities in Energy, Geoscience, Infrastructure and Society

E: egis-pgr-apps@hw.ac.uk
T: +44 (0) 131 451 8363

PhD opportunities in Engineering and Physical Sciences

E: pgr.eps@hw.ac.uk
T: +44 (0) 131 451 3027

PhD opportunities in Social Sciences

E: pgadmissions.soss@hw.ac.uk
T: +44 (0) 131 451 3284

PhD opportunities in Mathematical and Computer Sciences

E: macspgenquiries@hw.ac.uk
T: +44 (0) 131 451 8444/8337

PhD opportunities in Textiles and Design

E: enquiries@tex.hw.ac.uk
T: +44 (0) 1896 892156

PhD opportunities in Edinburgh Business School

E: oncampusmba@ebs.ac.uk
T: +44 (0) 131 451 3090

Postgraduate Research Prospectus

www.hw.ac.uk/research/phd-opportunities.htm

Researcher Development

Research Futures provides postgraduate research students with a full programme of training and development throughout their PhD studies. This contains a wide range of courses pitched at various levels of expertise. Course sessions are typically delivered in three-hour sessions facilitated by experts.

Heriot-Watt University is a member of Vitae, an international organisation dedicated to world-class professional and career development of researchers. Vitae offers a wealth of resources and advice designed specifically for researchers.



WORLD-CLASS RESEARCH

The Research Excellence Framework (REF) assesses the quality of research in UK higher education institutions.

No.1/ 9th

In the REF 2014 Heriot-Watt ranked 9th university in the UK and 1st in Scotland for research impact.

RESEARCH-LED EDUCATION

80%+

Over 80% of our academic staff are engaged in research at internationally recognised levels, delivering impact across society in areas as diverse as providing greater equality for deaf people, managing risk in the insurance industry and enhancing oil extraction from our seas.

82%

Overall 82% of our research is assessed as world-leading or internationally excellent in our core disciplines of science and engineering, business and management, languages and design (REF 2014).

www.hw.ac.uk/research

Our Pioneering Research is...

DEVELOPING NEW TECHNOLOGIES FOR FUTURE ENERGY

Leading research with key industry partners, we are helping reshape the energy landscape for the future. Our research centres on the development of new, more efficient and economical technologies for renewable energy production. Integrating new techniques and approaches within existing infrastructure provision, we also focus on societal, economic and environmental impacts.



SUPPORTING SOCIETAL DEVELOPMENT

Investigating the relationships between social, economic and business management in support of building a healthier and wealthier society, our research focuses on organisational and social psychology, on cyber wellness and social policy. Linkages are made with business ethics, governance and economic growth.



ENABLING NEW BUSINESS MODELS TO SUPPORT A CIRCULAR ECONOMY

Supporting a circular economy model, our experts focus on the use of materials, and on developing our built environment and infrastructure provision. We provide innovative solutions for product design and development that maximise product lifespan and minimise resource use. Our experts also develop new business and policy approaches in support of the application of these new solutions.



REDUCING THE IMPACT OF HUMAN ACTIVITY ON OUR ENVIRONMENT

Ensuring environmental sustainability underpins all of our research. Examining how human activity affects our natural environment and ensuring we minimise and mitigate any negative impact is core to our work. Our experts focus on water, air and wastewater treatment as well as on the development of environmental biotechnology and green manufacturing products and processes.



How to Apply



APPLYING FOR TAUGHT AND RESEARCH POSTGRADUATE PROGRAMMES

Entry requirements

General rules are:

- For entry to a taught Masters programme you need a minimum of a first degree at Lower Second Class Honours (or the equivalent).
- For entry to a research programme, you need to have a Masters degree in a similar field or the equivalent.
- If you have relevant work experience and some academic attainments but no degree it may be possible to be admitted to a postgraduate programme. Please contact us to discuss your background.
- If English is not your first language then an IELTS score of 6.5 (minimum) will be required. You can also study an English programme at Heriot-Watt to fulfil this condition.



MAKING YOUR APPLICATION

To submit an application online you will need to create an account. You can then use these login details to upload your supporting documents or track the status of your application.

For further details of applying visit: www.bit.ly/HWUMApply

You will need to create an account and choose the academic year in which you wish to study.

Once you have filled in all the relevant sections please upload the following documents:

Copy of the photo page of your passport, English language certificates, e.g. IELTS, from an approved centre.

If you have already created an account for your chosen degree programme(s) you can log back in without the need to create a new login and account.

ENGLISH FOR POSTGRADUATE STUDY

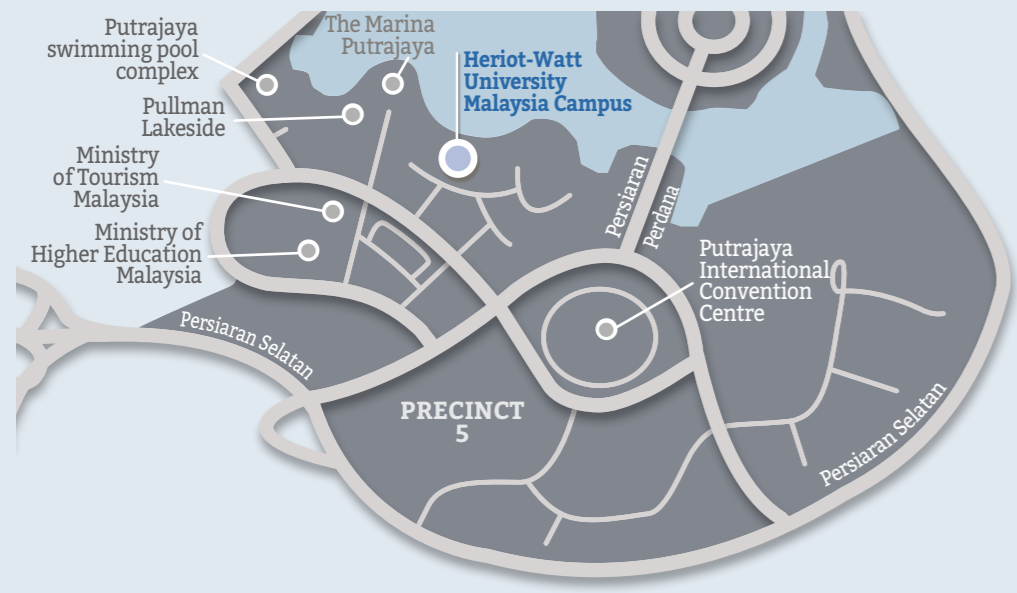
Postgraduate study requires a good level of English language proficiency and academic skills to ensure you can understand lectures, participate in seminars, read and understand academic research papers and use ideas in your writing. There are a range of programmes to help you to reach the level you need to be successful on your degree.

Full details on all our English programmes and equivalent test scores can be found here: www.bit.ly/hwumenglish



SUPPORTING INTERNATIONAL STUDENTS

Our Education Consultants and International Student Services Office can provide help and support on all issues relating to your student visa to study in Malaysia including accommodation, and medical check-ups. you can find more information online: www.bit.ly/hwuminternational



- ROAD
- LANDMARK
- ACCOMMODATION
- KUALA LUMPUR INTERNATIONAL AIRPORT

No 1, Jalan Venna P5/2
Precinct 5,
62200 Putrajaya,
Malaysia
www.hw.edu.my

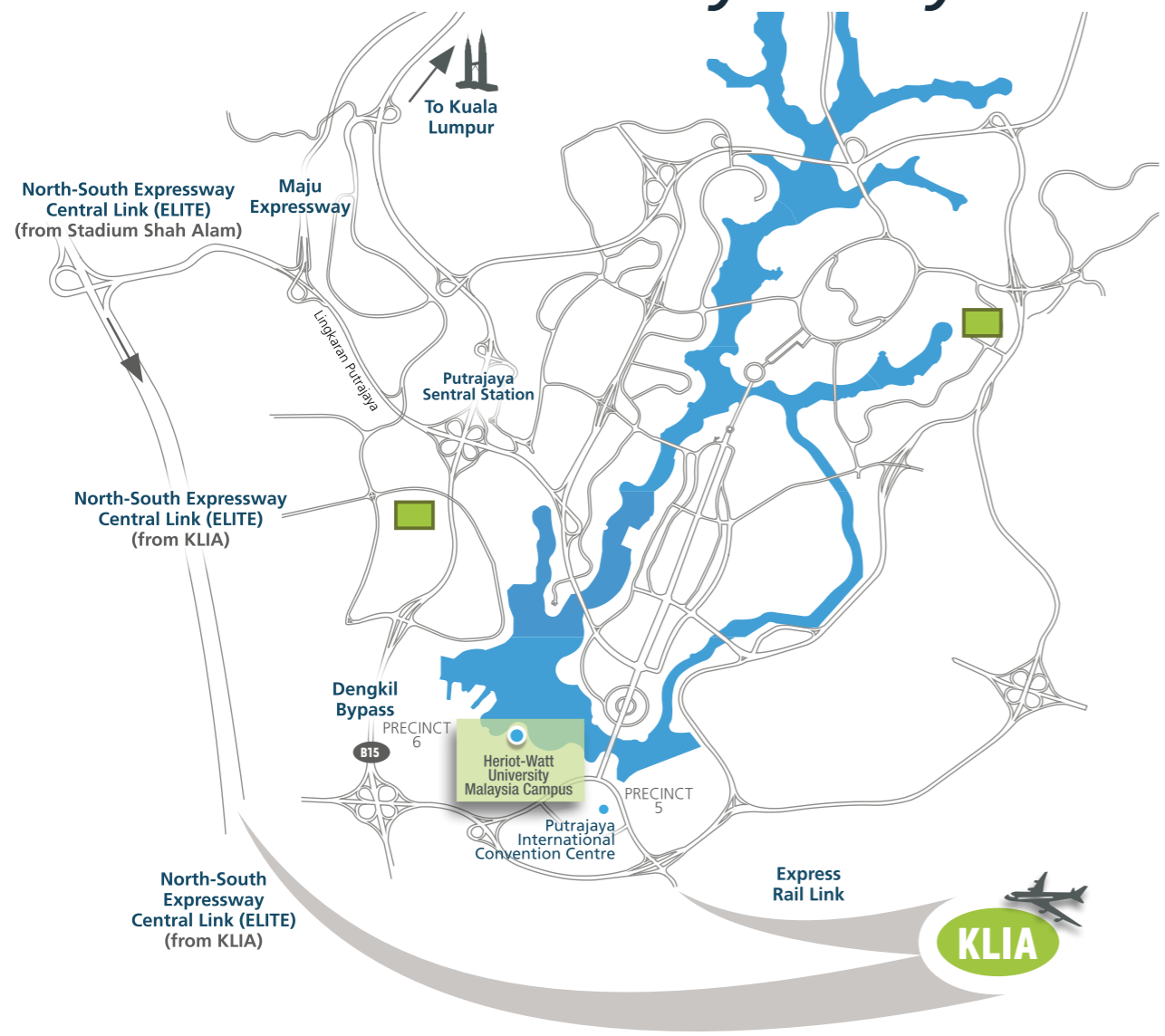
Latitude: 2.899305
Longitude: 101.6727019

Contact Us

Online, by telephone, via email and in person - our dedicated staff are always here to advise and help you.



Route map to Heriot-Watt University Malaysia



www.hw.edu.my



hwum@hw.ac.uk



+6012 651 2599



[/HWUMalaysia](https://www.facebook.com/HWUMalaysia)



[@HeriotWattUni](https://twitter.com/HeriotWattUni)



[hwumalaysia](https://www.instagram.com/hwumalaysia)



+60 3 8894 3888
+60 3 8894 3999

Heriot-Watt University Malaysia Campus
No 1, Jalan Venna P5/2
Precinct 5
62200 Putrajaya
Malaysia

For MBA Programme applications:
www.ebsglobal.net/programmes/mba-part-time-admissions-malaysia
malaysiaMBA@ebs.hw.ac.uk
 03-8894 3683/03-8894 3684

DISCLAIMER OF LIABILITY

Whilst every effort has been taken to ensure the accuracy of the information in this prospectus at the time of going to press, the University wishes to emphasise that the programmes, facilities and other arrangements for students described in this publication are regularly reviewed and are naturally subject to change from time to time.

Applicants and students should enquire as to the current position when the most up-to-date information is required. The University also gives notice that it will not accept liability for any loss or injury sustained by a student whether in connection with their studies or not.

Heriot-Watt University is a registered trademark. The logo is a trademark of the University. Neither can be used unless prior written permission has been obtained. All information correct at the time of going to print.

The University accordingly reserves the right without notice to vary the content of the programmes and syllabuses previously announced, to withdraw degree programmes and to modify, as seems appropriate, the facilities and arrangements for students. All changes to programme content will be subject to MQA and MOHE approval. If the University discontinues any programmes, applicants will be notified and given alternate options. Any changes will be incorporated in subsequent editions of this prospectus.

Please note: Heriot-Watt University Malaysia undergraduate years 1-3 are equivalent, in the Heriot-Watt University UK system, to years 2-4 and will appear as such on academic correspondence. All graduate employment statistics relate to Heriot-Watt University as a whole.

Editing: Marketing and Communications, Heriot-Watt University.
Design and Production: Media Services, Heriot-Watt University
Photography: Matt Davis, Colin Gruber, Colin Hattersley, istockphoto.com, Douglas McBride, Fiona Nimmo, Nick Pugh, Simon Quinn, Anthony Stone, Mark Symes, Laurence Winram.

Heriot-Watt University Malaysia Registration Number: DULN007(WP). Heriot-Watt University is a charity registered in Scotland, SC000278. © Heriot-Watt University. June 2019. All rights reserved.

Printed in Malaysia through Dimension Publishing.
Front Cover: Colin Gordon, MA (Hons) International Business Management
Back Cover: Dhanishtha Patel, BSc (Hons) Psychology with Forensic Science.

Schools have the option to apply progression requirements above the minimum University requirement, which are approved by the Studies Committees.

Heriot-Watt University

Edinburgh Campus

Edinburgh EH14 4AS

T: +44 (0) 131 449 5111

F: +44 (0) 131 449 5153

Heriot-Watt University

Dubai Campus

Dubai International Academic City

PO Box 294345

Dubai

United Arab Emirates

T: +971 4 435 8700

F: +971 4 447 7350

Heriot-Watt University

Malaysia Campus

No 1 Jalan Venna P5/2

Precinct 5

62200 Putrajaya

Malaysia

T: +60 3 8894 3888

F: +60 3 8894 3999

www.hw.ac.uk

