

R•E•A•L Schools

CHERAS CAMPUS

R.E.A.L INTERNATIONAL SCHOOL • SEKOLAH SERI SURIA

R·E·A·L[®]

JOIN ONE OF THE *Largest Education Groups* IN MALAYSIA

In 2017, R.E.A.L Education Group became part of Paramount Corp Bhd who through KDU University College and Sri KDU School, have established a tradition of academic excellence.

PARAMOUNT
EDUCATION

EARLY CHILDHOOD EDUCATION

PRIMARY & SECONDARY SCHOOL EDUCATION

TERTIARY EDUCATION

ENRICHMENT EDUCATION

MORE THAN 25,000 STUDENTS

R·E·A·L Kids®
PRESCHOOL

The largest
owner-operated
kindergarten chain
in Malaysia

34

**Fully-owned
centres**

R·E·A·L Schools
INTERNATIONAL & NATIONAL

Shah Alam Campus
Cheras Campus
Johor Bahru Campus

3

**International
Schools**

3

**Private
Schools**



Sekolah Sri KDU



Sri KDU International School

**Kota
Damansara
Campus**



CAMBRIDGE
ENGLISH FOR LIFE

Renowned English
Specialist & Training
Provider

**Over
60**

**Cambridge
English for
Life centres**

REAL Centre for Learning and Teaching (CELT)

To ensure we maintain world-class curriculum and teaching standards, our CELT unit led by Dr Angelo Maduli with 14 dedicated staff, supports our schools by conducting in-house training and coaching sessions with all our teachers. It also drives our research and development efforts to ensure that we are providing cutting edge education that reflects the most current ideas and innovations.

INTRODUCING OUR *Leadership Team*

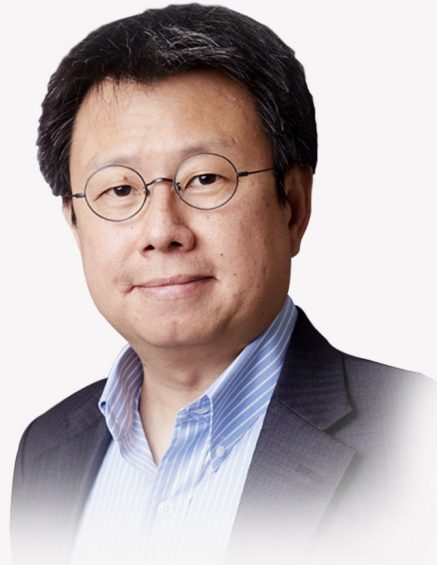
CEO

Dr Goh Chee Leong

CEO of R.E.A.L Education Group Sdn Bhd

Dr Goh Chee Leong served in HELP Education Group for 20 years and was the founding CEO of HELP Education Services, which established two international schools in Kuala Lumpur and Johor Bahru. He was also the founder and Dean of the Faculty of Behavioural Sciences at HELP University, Kuala Lumpur, which houses one of the largest Psychology programmes in South East Asia with over 1,400 full-time students.

Dr Goh was the past President of the ASEAN Regional Union of Psychological Societies (ARUPS) and past President of the Malaysian Psychological Association (PSIMA) and has also been appointed Consultant Psychologist for MENSA Malaysia. He obtained his PhD in Psychology from the University of Otago in New Zealand, where he was conferred the Otago Postgraduate Award.



“Our goal is to provide innovative, world class, global education at an affordable price”

Dr Goh Chee Leong, R.E.A.L CEO

Dr Goh has served as an external consultant and trainer with Shell, Ogilvy & Mather, Petronas, Maxis, MISC, CIMB, Public Mutual, Prudential, Standard Chartered Bank, Digi, Great Eastern, Kraft, Sime Darby, Bank Negara, Hitachi, Mimos, Toyota, and BASF. His areas of specialization include the application of psychology to change management, talent management, conflict mediation, customer service, people management, stress management, talent management, and leadership.

ACADEMIC HEAD

Dr Murali Tharan

Academic Head
R.E.A.L Schools, Cheras Campus

Dr Murali has over 34 years of experience in education. Having studied TESOL before beginning his career in education, he then pursued his bachelor's, masters and doctorate degrees in Political Science which he obtained from USM.

For many years he has played key leadership and training roles in the Ministry of Education, particularly in the area of teacher training, serving as a senior lecturer in various teacher training colleges around the country. He is well published in the area of leadership, education, diplomacy, and political science

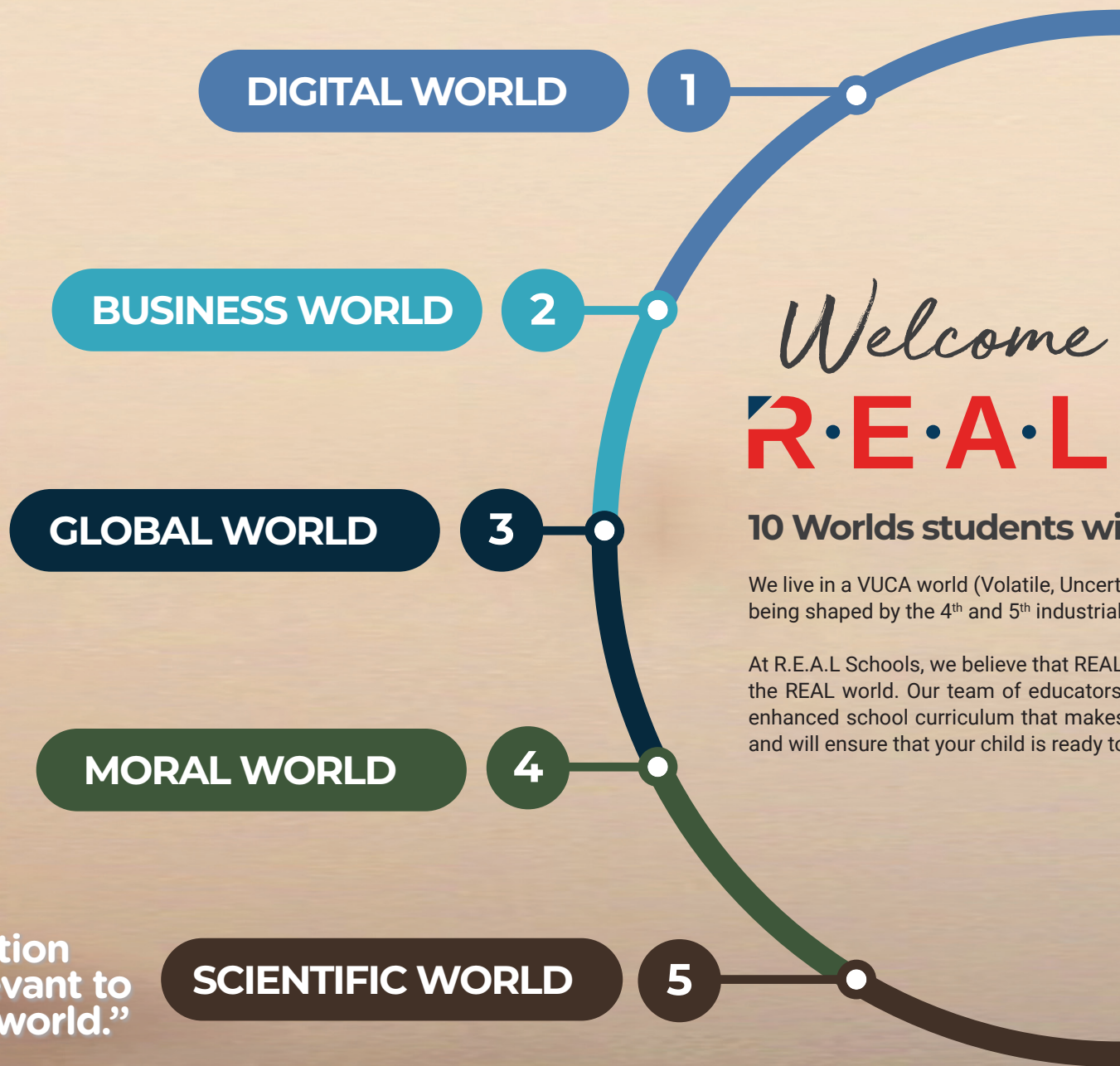
“Education and being educated with experience of life, takes one across horizons”

Dr Murali, Academic Head

Dr Murali is the recipient of numerous awards; namely the Excellence Service Award, Academic Lecturer Excellence Award from the Ministry of Education Malaysia, and Tutor Excellence Award from Open University of Malaysia. He has shown great interest in reading, research-based work, music, and learning about other cultures and customs. With that, he brings with him a wealth of experience, knowledge, and skills to his role as Academic Head of R.E.A.L Schools, Cheras Campus.







Welcome to the **R·E·A·L** world

10 Worlds students will discover at R.E.A.L

We live in a VUCA world (Volatile, Uncertain, Complex, Ambiguous) that is being shaped by the 4th and 5th industrial revolutions.

At R.E.A.L Schools, we believe that REAL education prepares students for the REAL world. Our team of educators have put together a unique and enhanced school curriculum that makes education relevant and exciting and will ensure that your child is ready to thrive in the REAL world.

“Real education
must be relevant to
tomorrow’s world.”



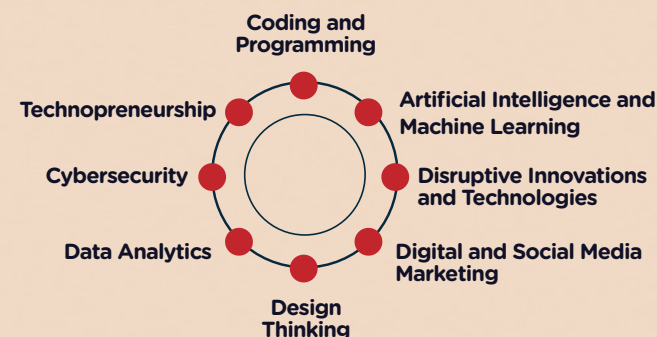
1 DIGITAL WORLD

Digital Mindedness and 4/R Readiness

To provide a taste of the real high-tech working environment whilst preparing students for the 4th industrial revolution and beyond, R.E.A.L in partnership with KDU University has developed a unique technology-innovation programme.

REAL World Tech Projects

Both primary and secondary school students will participate in 2 exciting tech projects a year that will cover the following key areas:



APPLE School Partnership

Starting from September 2019, R.E.A.L Schools will be moving towards a 1-to-1 iPad model in which all students from Primary 4 onwards will use iPads in school to enrich their learning process.

To ensure that technology enhances the learning process in a meaningful way, we will be working in partnership with the APPLE Regional Team and guided by the SAMR model introduced by Dr Ruben Puetendura, the world-famous edutech academic and consultant.

All students will also be given training in responsible use of technology and will be closely supervised to ensure there is no abuse of the technology.



2 BUSINESSWORLD

An Entrepreneurial Mind

Li Ka Shing once remarked that an entrepreneur's unique gift was to synthesise information, to join the dots and see opportunities where others cannot. Statistics quoted by the World Economic Forum state that the next generation will be twice as likely to start their own businesses. Regardless of what career pathways our children take, to succeed they will require some measure of an entrepreneurial mind.

REAL Entrepreneurship Programme

This specially-designed programme for primary and secondary students is designed to encourage students to see the world from an entrepreneur's eyes; identifying opportunities, recognising consumer trends, joining the dots, mobilizing resources, managing finances, and being results driven.

In this programme, students will work on a variety of group and individual projects that will help them master the following knowledge and skill sets:

- Consumer psychology 
- Contextual intelligence
- Product and service development
- Knowing how to register a business
- Basic financial management and accounting
- Marketing 
- Entrepreneurial thinking 

Financial Literacy

To prepare students for their career and financial future, R.E.A.L Schools provide financial literacy workshops by MoneyTree to teach students about financial management and good money habits, among other things. Students will be equipped with the knowledge, habitude, and life skills they need to become financially-savvy adults.

3 GLOBAL WORLD

Global Citizenship

R.E.A.L Schools encourages students to become global citizens who possess a global outlook and worldview.

R.E.A.L Schools' latest enhanced curriculum will ensure that students are sensitised to the needs of their world, using United Nations' Sustainable Development Goals (SDGs) as a guide and enabling them to identify and implement strategies to bring about change in their local and global communities.

REAL International Pen Pal Programme

An opportunity to connect and be part of a global pen pal network from young

SDG Student Projects

From Year 1 onwards, students will be given projects to foster an appreciation of the United Nations' Sustainable Development Goals (SDGs)





4 MORAL WORLD

'Integrity and Compassion'

R.E.A.L Schools helps develop the character of our students. We believe that the true measure of a person lies in their goodness, compassion and moral courage and our schools integrate these values into every lesson, every day.

Community Service Partnership (CSP) Projects

To cultivate a sense of community mindedness and responsible citizenship, all students at R.E.A.L will actively participate in 1 community project each year. In secondary school, students will be challenged to develop high impact, sustainable solutions to deal with larger community problems as part of our efforts to expand their 'circle of circle' as well as teaching them to exercise community leadership.



5 SCIENTIFIC WORLD

'Intellectual Curiosity'

Science is the window to our world. Enlightening students on the scientific method of inquiry not only helps them master the discipline of research but also helps them develop an observant and critical mind. As a key component of our STEAM programme, the sciences and mathematics are two of our main strengths at R.E.A.L.



R.E.A.L Schools' winning team at the Sri Prakash 4th International Children's Science and Mathematics Festival.

R.E.A.L Schools' Science and Maths Initiatives:

Opportunity for students to work with universities to conduct research and publish their work in academic journals



STEAM Fair held once a year to showcase student projects



6 LINGUISTIC WORLD

Language Mastery

Language is the building block for thought and learning. A good education begins with a solid foundation in language and at R.E.A.L Schools, we will give your child a solid foundation in both their spoken and written skills with our enhanced languages programme.

English

Students in our international school will have the chance to immerse themselves in an English-speaking environment that will help their mastery of the language.

Mandarin

Students in our international school will have the opportunity to pursue an elite-level Mandarin programme which follows the **Independent Chinese School curriculum**. National school students will have the option of taking SPM Mandarin as a first language.

Bahasa Malaysia

Students in our National School will be prepared to take SPM Bahasa Malaysia.

7 SPORTING & OUTDOOR WORLD

Physical Fitness

Sports combined seamlessly with academics will enable students to score equilibrium in education; while cultivating a healthy, balanced lifestyle from young. Our commitment at R.E.A.L Schools is to encourage all students to attain a high level of physical fitness, while at the same time nurturing a healthy interest in different sports.

This commitment is embodied in the following student outcomes:

By Year 11 / Form 5:



All students will be exposed to a minimum of **10 sports** and mastering a minimum of 2



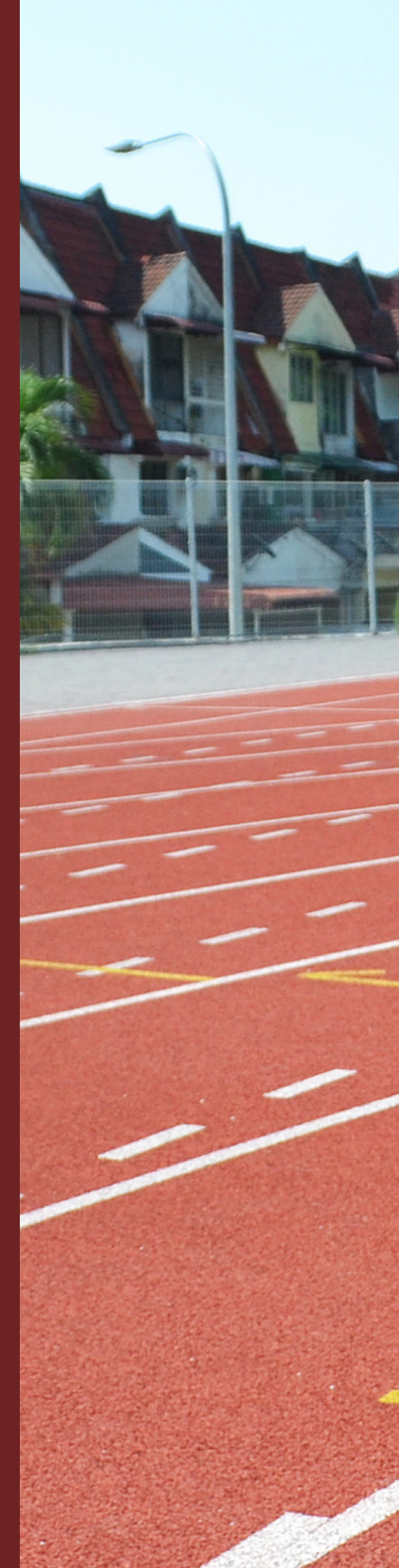
All students will be able to complete a **5km run**



All students will be able to **swim 100m** (4 laps of a 25m pool)



All students will be able to conduct their own fitness check and develop their own personal fitness plan including developing a healthy diet





Outdoor World *'A love of nature'*

Malaysia hosts some of the oldest and most beautiful rainforests in the world. At R.E.A.L, we encourage children to love and enjoy nature. We try to fill our campuses with trees, fields, plants, and gardens so that our students can learn in a 'green' environment that provides a soothing setting for learning. Beyond the campus, all R.E.A.L students will take part in camping trips and other outdoor expeditions as part of the Duke of Edinburgh (DOE) programme.



**Outdoor
survival skills**

**REAL World
SURVIVAL SKILLS**

**Urban safety
training**

**First aid
certification
including CPR**

By Year 10 / Form 4, all R.E.A.L students would have acquired the following survival skills:

**Self-defence
training**





8 DESIGN & INNOVATION

WORLD

'Design Thinking'

Providing students various avenues to constantly express themselves freely, critically, and creatively in the diverse world of design and even culinary arts, ensures that the process of innovation and 'design thinking' becomes second nature to them.

Design & Technology Programme



Maker spaces within each school

Inspired by MIT's famous Fab Labs in the early 21st century, the **"Makerspaces"** is a place for students, both primary and secondary, to come and work on innovation and design projects. Equipment like 3D printers, Lego robotic sets, and art & craft materials are made available for students to run wild with their imagination and ideas.



9

PERFORMING ARTS WORLD

Talent and Confidence

R.E.A.L students will enjoy the freedom to express themselves through dance, drama, and music; and at the same time, develop their courage and confidence to perform in public and among their peers.

Music and Drama will be offered to all Year 1 to 9 and Standard 1 to Form 3 students as part of our core curriculum.

To bring our language programme to life, Drama will be integrated into Bahasa Malaysia, Mandarin and English lessons.

Every student will be involved in a short play and musical performance once a year to showcase their talents



10

PSYCHOLOGICAL WORLD

Mental and Emotional Resilience

R.E.A.L Schools will offer a comprehensive care system that offers mental and emotional support services to students as well as various workshops to help them develop the resilience and self-coping skills they need to grow into healthy, well rounded, and independent young adults.

EQ Workshops

- Stress management
- Anger management
- Self motivation and self discipline

Mental Well-being Workshops

- Understanding who I am: self identity and self esteem
- Understanding mental health issues (depression, anxiety, eating disorders)

Mental Health Ecosystems

- Full-time counsellors on campus
- Trained pastoral care teams with clear referral systems
- Trained peer support groups

R·E·A·L WORLD CAREER GUIDANCE MODEL:

Helping Your Child Find Their Path

Our mission is to help students succeed by finding careers that fit their talents, interests, and life goals. Our students' journey at R.E.A.L Schools will take them through a comprehensive and immersive process that will help them find their direction and calling.

“ R.E.A.L has completely changed the way we look at career guidance. In a VUCA world where the economic, business, political, and technological contexts are ever changing, our students need to be prepared to be agile, mobile, and adaptable.”

Career Coaching Programme

- Self Discovery Workshop
- REAL Self Discovery Virtual Book

Year 1

4IR Readiness :

REAL Technology
and Entrepreneurship
Projects

- REAL World Internships
- REAL World Leadership

-
- Talents
 - Interests
 - Personality
 - Life Goals

Track 1

Discovering Self

Continuing Journey of Discovery

Year 11

- REAL Work Simulations
- Annual Careers Discovery Week

Track 2

Discovering the World

R·E·A·L WORLD

WORK SIMULATION PROJECTS:

BRINGING INDUSTRY INTO SCHOOL

To get a taste of work in the REAL world, Year 4 to 11 students will have the opportunity to experience 2 work simulations a year. Each simulation project is designed to give students an in-depth experience of what it is like to work in a particular industry with real corporations.

**Tech Innovation
Simulations**

**Business Consulting
Simulations**

**Medical and Healthcare
Simulations**

**Legal World
Simulations**

**Finance and Accounting
Simulations**

**Engineering
Simulations**

**Education
Simulations**

**Stock Market and
Investment Simulations**

**Marketing and PR
Simulations**

R·E·A·L WORLD LEADERSHIP PROGRAMME

Discovering the Leader in Every Child

From Year 3 onwards, students will be able to serve as leaders in a variety of roles based on their respective interests and talents. This 'servant leadership' model will enable them to serve the school community with purpose and passion.

REAL Sports Leaders

REAL Academic Leaders

REAL Community Leaders

REAL Literary Leaders

REAL Performing Arts Leaders

REAL Event Management Leaders

REAL Media Leaders

REAL Tech Innovation Leaders

REAL Well-being Leaders

“By replacing the old-style prefectorial system with this revolutionary new leadership model, R.E.A.L is taking the lead in teaching the next generation that leadership is about service, not power.”

Dr Goh Chee Leong, R.E.A.L CEO

R·E·A·L HOLISTIC DEVELOPMENT: CELEBRATING OUR *Student Achievers*



Clarice Lau Le Yan

(Regional Rounds) World Scholar's Cup 2015
- Gold medal winner



Isaac To

Majlis Sukan Negara (MSN)
Elite Under-12 Golf Tournament
- 1st place



**Students from
R.E.A.L Schools,
Shah Alam Campus**

2016 ASIAN Science & Maths Olympiad
(ASMO), Math Team Award (Gold)



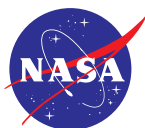
**Keshaavi A/P
Peramasivan**

Trinity College Inter-School Public Speaking
Competition
- 1st place



**Wong Zi Xuan,
Yee Ke Xin,
Ng Kah Zun &
Ho Hao Yan**

Design for Change ambassador team
representing Malaysia at the 2018 'Be
the Change Conference' in Taiwan



**Mitsuki Ito,
Liew Yung Chaw,
Yap Hao Yi,
Charlize Choo,
Liew Yung Yee,
Saw Mi Chelle,
Liew Yung Chin,
Victor Chuah &
Sheryll Low**

NASA International Space Essay Competition
2019 - Best Performers

IGCSE

Tang Rui Kien

June 2017 Cambridge IGCSE examinations,
'Top in the World' grade in Mathematics

Ian Chong Zhen Ming

June 2018 Cambridge IGCSE examinations,
11As (9A+, 2A)

SPM

Kenneth Ong Ken Huey

Sijil Pelajaran Malaysia (SPM) 2017 - 11As

**Chew Pei Qi &
Keertana a/p Ganeshwaren**

Sijil Pelajaran Malaysia (SPM) 2017 - 10As



Khairil Ridhwan

29th SEA Games - Gold medal winner, short track speed skating
(men's 3,000m relay)

Sophia Lim & Chuah Pei Xuan

'Next Big Chef 2019' competition - Champion



**Chia Chin Hock,
Hew Ja Jet &
Wong Huai Ann**

Sijil Pelajaran Malaysia (SPM) 2018 - 10As

OUR STUDENTS SHARE THEIR *REAL* Stories

The teachers at R.E.A.L show care towards all the students; whether it is in their studies or personal lives. They are also willing to share their past experiences and are always encouraging and inspiring us to improve and transform into the best version of ourselves.

“In my opinion, there are many inspiring teachers in my school”

Foong Wai Keat , Secondary 5 student

Every student is able to receive more individual attention and support because of the small class sizes. Teachers come up with interesting teaching methods for students to understand a particular topic well. Meanwhile, the school's student ambassador teams provide opportunities for students to increase their confidence in preparation for the workforce. Hence, students at R.E.A.L Schools do not only improve their academic performance, but also gain valuable experiences that cannot be learnt from textbooks.

“Students gain valuable experiences that cannot be learnt from textbooks”

Lee Yen Xing
Secondary 4 student

With each passing day, week, month, and year spent in R.E.A.L, I grew in knowledge, gaining valuable experiences which would be of great use in the future. R.E.A.L Schools' facilities provided me the opportunity to engage in activities such as swimming, badminton, futsal, and more; with external coaches to train us in extracurricular activities like karate and taekwondo.

There are also fully-equipped science and computer laboratories which allow students to get hands-on experience and take part in experiments, which really helped me understand the concepts of science better, rather than being confined to merely reading off a textbook.

I also enjoyed being an active participant in R.E.A.L Schools' annual events such as Sports Day and Cross Country, which brought out the competitiveness and athletic skills of all students, while uniting them under their respective sports houses. I appreciate

every team-working session that allowed me to learn how to follow instructions and be a good leader - skills which I feel will be of importance to me in my working life. Furthermore, I also developed patience in communicating with my juniors and respect for seniors and teachers while working as a team.

I would like to thank all my teachers who helped guide me through my years at R.E.A.L Schools. Thanks to their commitment, dedication, perseverance, and determination to help us all become better students, I managed to make it smoothly through. During exams, they would go the extra mile to help students better understand their subjects and clarify any doubts we had. They were always there to give help when we needed it, and would always encourage us when we were down. Thank you, R.E.A.L Schools, for making my schooling journey worthwhile!

“I learnt to be a good leader, which will be important in my working life”

Woon Yi Jie Ruth
R.E.A.L International School alumni
& Cambridge IGCSE straight A's student

There are many joyous memories of studying at R.E.A.L Schools that I will cherish and keep with me for life. R.E.A.L Schools has always provided an extremely conducive and pleasant environment for students to grow in character and also as individuals. At R.E.A.L Schools, you will meet friends and teachers who would become your second family.

“R.E.A.L School has an extremely conducive and pleasant environment”

Dashxmi Yohan, Secondary 5 student

R.E.A.L Schools had given me opportunities to participate in various school events and activities such as charity carnivals and international days and this helped me acquire leadership skills, better communication skills, and the ability to withstand and cope with stress.

The teachers were caring and considerate, and respected me as a young adult. My confidence level improved as a result and I now feel more confident to speak in public and voice my opinions.

“The teachers were caring and considerate, and respected me as a young adult”

Wong Jun Kang
R.E.A.L International School alumni



R·E·A·L INTERNATIONAL SCHOOL (RIS) INTERNATIONAL CURRICULUM

PRIMARY

**Key Stage 1 (Year 1 & 2) &
Key Stage 2 (Year 3 - 6)**

RIS Primary adopts the **Cambridge International Primary Programme (CIPP)** for students aged 5 to 11 years old. This programme aims to provide students with a firm grounding in all subjects, as well as the confidence to respond readily and enthusiastically to new schooling experiences. Here, students also have the opportunity to learn foreign languages like Mandarin.

SECONDARY

Key Stage 3 (Year 7 - 9)

The Cambridge Lower Secondary Programme is for students aged 11 to 14 years old. It offers a flexible curriculum with integrated assessment that provides excellent preparation for further qualification including the Cambridge IGCSE. The Cambridge Checkpoint Tests provide schools with an external, international benchmark on student performance at the end of the stage.

Key Stage 4 (Year 10 & 11)

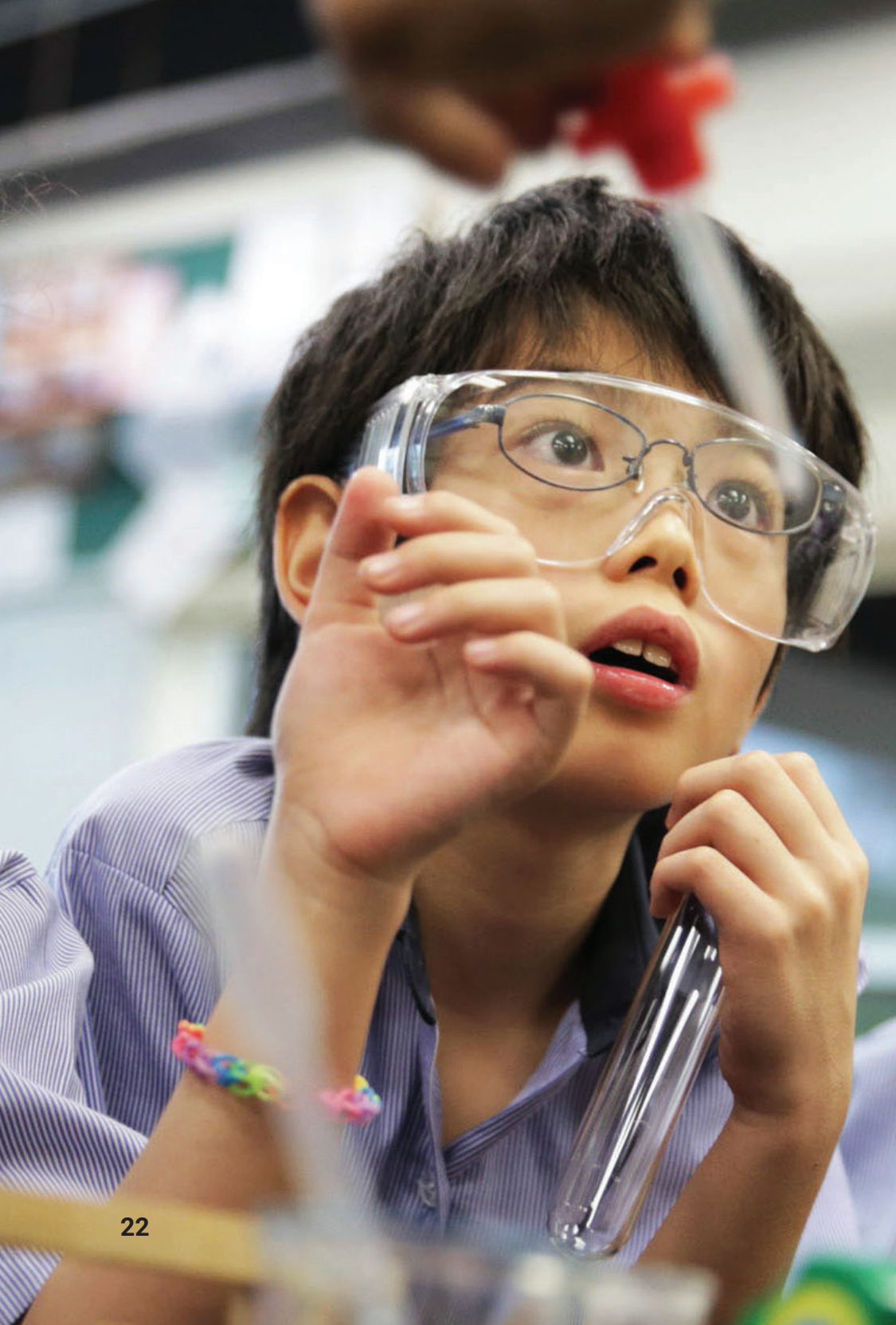
The Upper Secondary Curriculum is based on the Cambridge International General Certificate of Secondary Education (IGCSE). It is the world's most popular international curriculum for 14 to 16-year olds, and is equivalent to SPM. The curriculum emphasizes on learner-centred and enquiry-based approaches towards learning. This facilitates the development of creative and critical thinking as well as problem-solving capacities.

* Our international curriculum Mandarin and Bahasa Malaysia (BM) subjects have been enhanced to be on par with Independent Chinese School-level Mandarin and SPM-level BM respectively to provide stronger language proficiency

ACADEMIC YEAR

1st semester : September – December
2nd semester : January – April
3rd semester : May – August





R·E·A·L NATIONAL SCHOOL (RNS) NATIONAL CURRICULUM

PRIMARY

**Level 1 (Junior 1 – 3) &
Level 2 (Junior 4 – 6)**

Standard primary education in Malaysia begins at age 7 and lasts for six years. The curriculum is based on the national KSSR / KBSR syllabus, preparing students for the Ujian Pencapaian Sekolah Rendah (UPSR) examination at the end of primary school.

SECONDARY

Lower Secondary (Senior 1 – 3)

The curriculum adopted is an integrated one for secondary schools (KSSM / KBSM), which gears students towards the more assessment-based Pentaksiran Tingkatan 3 (PT3) in Form 3. Lower secondary education typically starts from age 13 to 15.

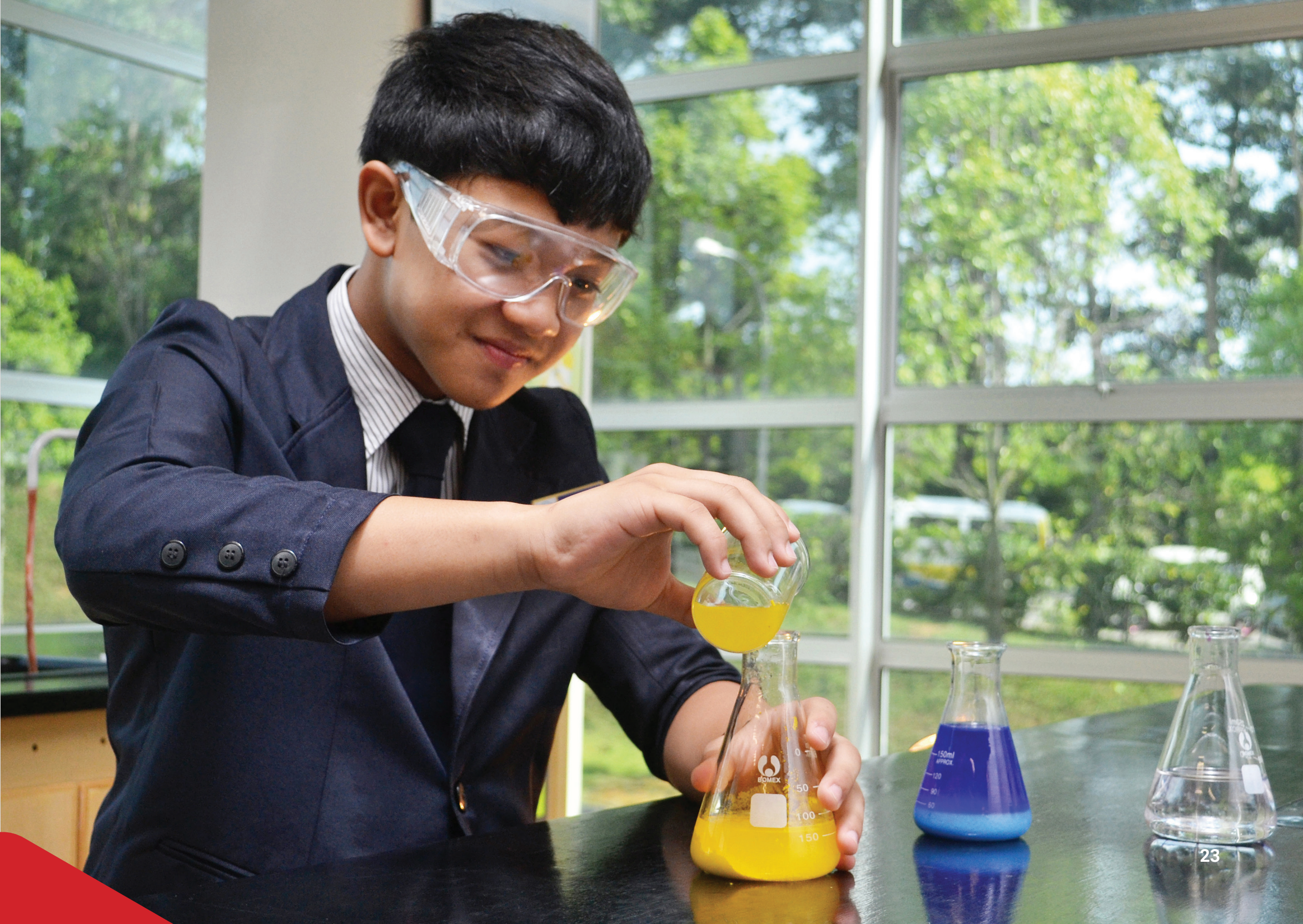
Upper Secondary (Senior 4 & 5)

The curriculum offered here is also based on the KSSM / KBSM. It spans a period of two years from age 16, where students select their preferred subjects that constitute a particular field of study; culminating in the Sijil Pelajaran Malaysia (SPM) exam.

* Our national curriculum English subject has been enhanced to be on par with Cambridge IGCSE-level English to provide stronger language proficiency

ACADEMIC YEAR

1st semester : January – June
2nd semester : July - December





A GREEN CAMPUS THAT CULTIVATES THE LOVE OF LEARNING

CHERAS *Hillview* CAMPUS
(R.E.A.L International School • Sekolah Seri Suria)

R.E.A.L Schools, Cheras Campus was established in 1985 and is our pioneer campus. It is built on 10 acres of land in Hulu Langat amidst some of the largest forest reserves, hot springs, waterfalls, and natural parks in the Klang Valley; including the Gunung Nuang reserve which has the highest peak in Selangor.

Blessed with beautiful views of the surrounding forest and hills, it provides a beautiful green environment for students to learn and grow amidst nature. Over the years our team of art teachers, working with students, have also made the campus into a living art museum with numerous murals and art installations that are reminiscent of George Town's famous street art. Among the campus' many proud traditions include staging live fashion shows and full-scale original musicals every year.



SCHOOL FACILITIES

Our purpose-built campus is designed to enhance one's learning experience and to create a safe and exciting space for students to enjoy school.



Canteen



Air-conditioned learning spaces



Library



Science laboratory

BOARDING FACILITIES

All R.E.A.L Schools provide student accommodation nearby, equipped with amenities such as wireless internet service and a 24-hour CCTV security system.

SPORTING FACILITIES



Swimming pool



Sports field



Playground



Gymnasium



Indoor sports hall & badminton court



Basketball court (indoor and outdoor)

DESIGN AND INNOVATION SPACES



Culinary Arts kitchen



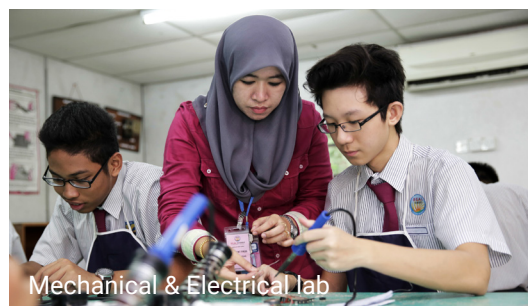
Makerspace



Woodwork lab



Art & Design room



Mechanical & Electrical lab

PERFORMING ARTS SPACES



Music, Dance, and Drama studios



Performing Arts theatre

R·E·A·L Education for the R·E·A·L World

www.realschools.edu.my

T : +603 9021 3601 F : +603 9021 4319 E : enquiry_ch@real.edu.my



REAL.Schools.Malaysia



realschoolsofficial



realeducationgroup

R·E·A·L Kids
PRESCHOOL

R·E·A·L Schools
INTERNATIONAL & NATIONAL

CAMBRIDGE
ENGLISH FOR LIFE

a member of
PARAMOUNT
EDUCATION

50
YEARS
PARAMOUNT